



A Division of Thiessen Products, Inc.

INSTRUCTION SHEET FOR No. 97225-55

SPROCKET SHAFT BEARING INSTALLATION TOOL

USE ON BIG TWIN 1955-2002 BIG TWINS

See JIMS No. 973 Adapter Tool for 2006 Dyna, 2007 to present Twin Cam with Timken Bearings

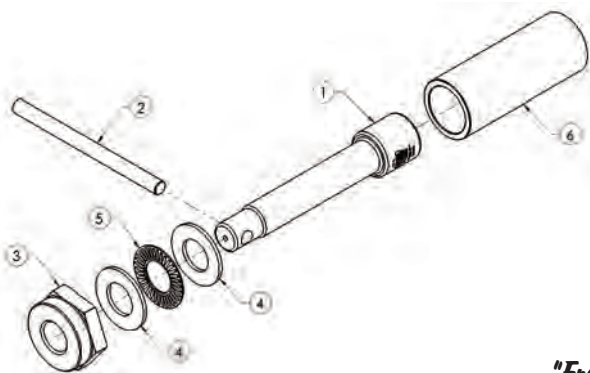
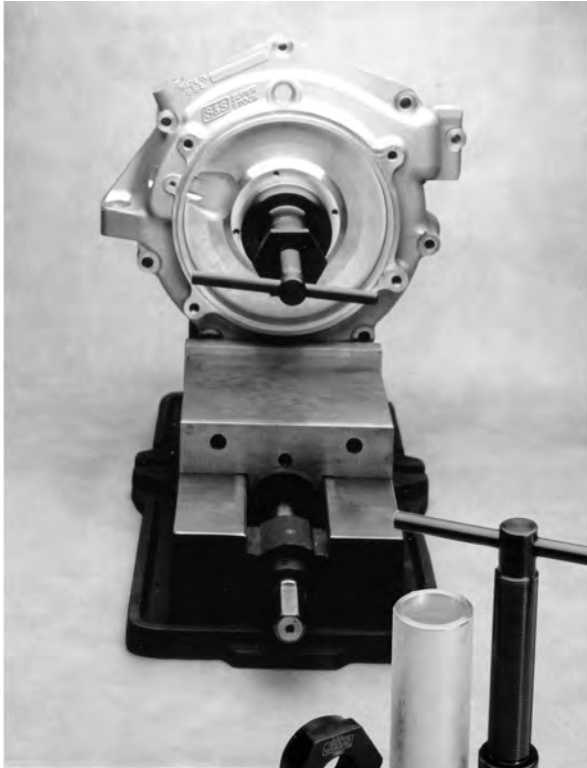
Tools required for use of this tool :

JIMS® No. 94660-37A socket tool or equivalent

H-D® Service Manual for Timken bearing sprocket shaft. (1955-2002 Big Twin)

NOTE:

1. Do not use impact tools on any flywheel assembly. Damage will occur to flywheels, bearings, and tool.
2. With the flywheels ready to go into the left case, mount in flywheel rebuilding jig, and clamp in a vice.
3. Lubricate the sprocket shaft bearing area with Assembly Lube, and I.D. of new bearings.
4. Install the new bearing with rollers facing the end of the shaft and spacer. (May need sprocket shaft spacer H-D® No. 24036-70 for first bearing)
5. Lube the main body No. 1 I.D. and O.D. of threads. Thread main body onto sprocket shaft with handle No. 4 as far as possible. Then remove No. 4 handle from the No. 1 main body.
6. Slip the slider No. 3 over main body No. 1, then install the lubed thrust bearing No. 5 and two No. 6 washers. Place bearing between the two washers, lubricate.
7. Thread hex side of No. 2 nut with shoulder onto the main body No. 1 and tighten until bearing bottoms out on shaft shoulder using JIMS® No. 94660-37A socket tool. See H-D® Service Manual for Timken style bearing torque specifications.
8. Remove nut No. 2, slider No. 3, No. 6 washer and thrust bearings No. 5, and spacer No. 24036-70, and install left case over the sprocket shaft. Do not remove the main body No. 1.
9. Slip the Timken inner spacer and bearing with the rollers facing the flywheels onto the sprocket shaft, followed by slider No. 3 and tool thrust bearing No. 5 and No. 6 washers. Thread on nut No. 2 with the hex end facing the flat bearings and washers.
10. Tighten No. 2 nut using JIMS® No. 94660-37A socket tool. See H-D® Service Manual for end play and Timken bearing torque specifications.
11. See JIMS® No. 39361-69 for installing left case seal with this tool.



PARTS AVAILABLE SEPARATELY

No.	Qty.	Description	Part No.
1	1	TOOL SPROCKET SHAFT BEARING INSTALLATION	97225-55-1
2	1	HANDLE, LONG	1028
3	1	TOOL, NUT, INSTALLING, BEARING	1026B
4	2	THRUST WASHER (TORRINGTON# NTC-1427)	2001
5	1	THRUST BEARING (TORRINGTON# NTC-1427)	2002
6	1	TOOL SPROCKET SHAFT INSTALLATION BEARING	97225-55-3
7	1	INSTRUCTION SHEET	97225-IS

"From the Track... To the Street!"

555 DAWSON DRIVE, CAMARILLO, CA 93012 • PHONE 805-482-6913 • FAX 805-482-9224
VISIT US ON THE WEB AT WWW.JIMSUSA.COM