



A Division of Thiessen Products, Inc.

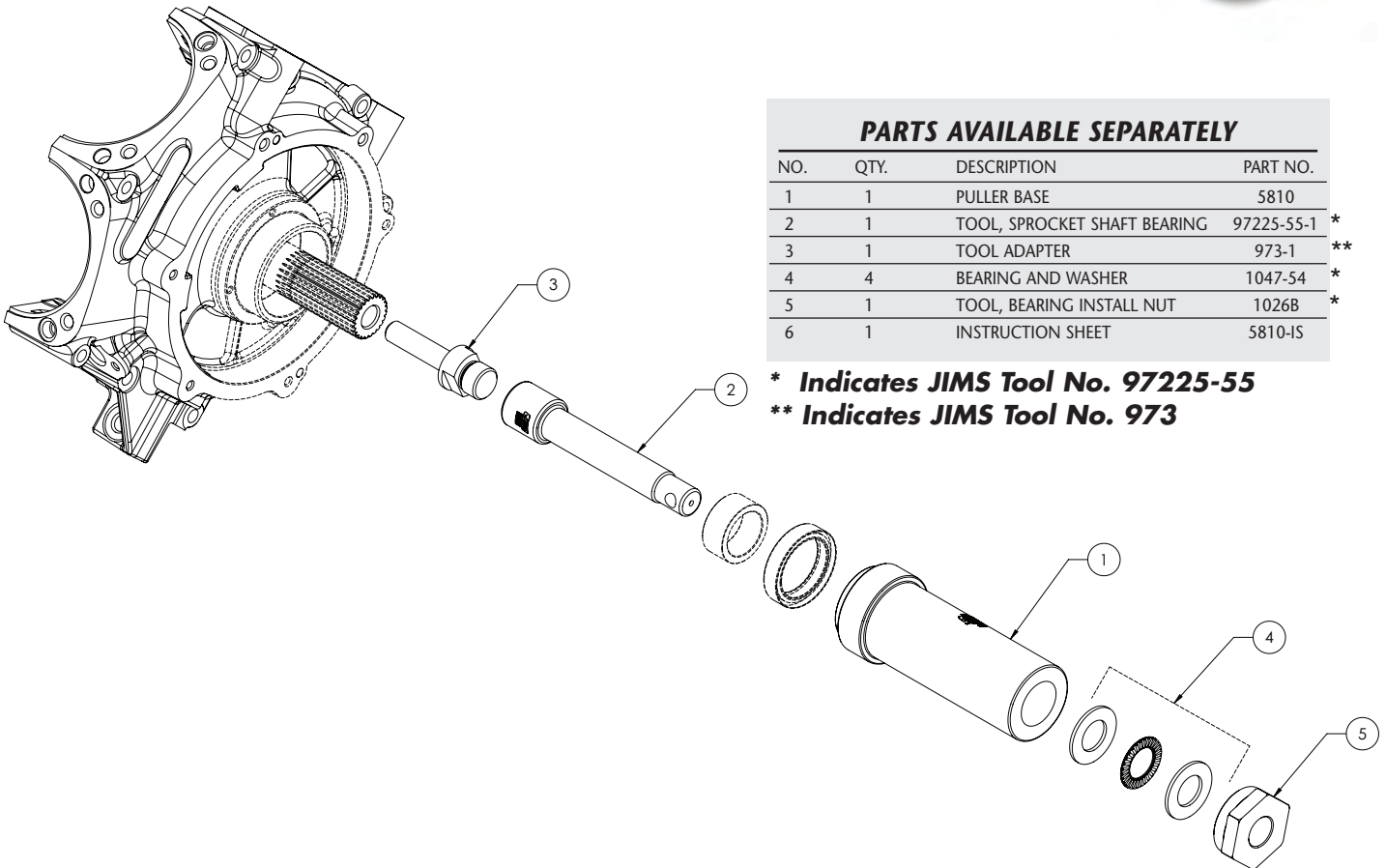
# INSTRUCTION SHEET FOR TOOL NO. 5810

## JIMS® No. 5810 MAIN BEARING SEAL INSTALLER IS DESIGNED FOR LEFT MAIN SEAL FOR MILWAUKEE EIGHT™

Use to press oil seal over sprocket shaft into case. Use with JIMS tool No. 97225-55 and with tool No. 973.

**Note:** Always wear safety glasses or other face and eye protection such as a full face shield. JIMS is not responsible for damage, injury, or your work. JIMS cannot be held liable for the quality and safety of your work.

1. Refer to H-D® Service Manual for seal removal.
2. Thread No. 973-1 Tool Adapter onto end of sprocket shaft.
3. Thread No. 97225-55-1 onto end of No. 973-1 Tool Adapter
4. Oil threads of tool and outside of seal before installing. Place lubed seal spacer inside seal with lip of seal facing out.
5. Place seal onto No. 5810 with spacer and slide over tool No. 97225-55-1.
6. Install Nice bearing and washers' No. 1047-54, with lubricated bearing between the two washers, over shaft. Oil ID of nut No. 1026B, thread onto shaft with small end of nut facing outwards. Tighten with No. 94660-37A socket until tool bottoms on crankcase.



<b>PARTS AVAILABLE SEPARATELY</b>			
NO.	QTY.	DESCRIPTION	PART NO.
1	1	PULLER BASE	5810
2	1	TOOL, SPROCKET SHAFT BEARING	97225-55-1 *
3	1	TOOL ADAPTER	973-1 **
4	4	BEARING AND WASHER	1047-54 *
5	1	TOOL, BEARING INSTALL NUT	1026B *
6	1	INSTRUCTION SHEET	5810-IS

\* Indicates JIMS Tool No. 97225-55  
 \*\* Indicates JIMS Tool No. 973

*Performance Parts For Harley-Davidson Motorcycles*

555 DAWSON DRIVE, CAMARILLO, CA 93012 PHONE 805-482-6913 • FAX 805-482-9224  
 VISIT US ON THE WEB AT WWW.JIMSUSA.COM