



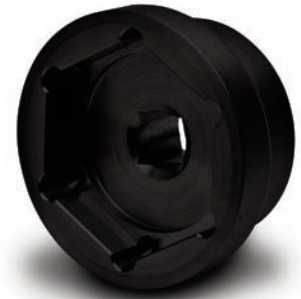
A Division of Thiessen Products, Inc.

INSTRUCTION SHEET FOR TOOL No. 5516

XL SPROCKET NUT SOCKET

Use on **left hand thread** sprocket nut on all 1991-present XL models.

Read the entire instruction sheet before using this tool. Wear safety glasses or a full face shield. Use care and follow safe shop practices. JIMS cannot be responsible for the quality and safety of your work or your personal safety.



SUGGESTED TOOLS AND SUPPLIES

- Service Manual for year and model bike being serviced
- ½" breaker bar
- ½" torque wrench
- Red Loctite #262
- JIMS No. **1708** Mega Nut (Upgrade for No. 35211-36B nut and No. 40251-92A lock plate)
- JIMS No. **2262** Pulley Lock Tool (For 28 or 29 tooth pulleys)
- 3/16" Allen driver

Note: Do not use with impact driver. For use with breaker bar or torque wrench only.

INSTRUCTIONS

1. Disconnect battery or remove maxi fuse.
2. Remove exhaust system, rear master cylinder, rider footrest, and sprocket cover to gain access to final drive pulley following H-D service manual.
3. Remove sprocket nut lock plate.
4. Shift transmission into neutral.

NOTE: The pulley nut has a left hand thread.

5. Use JIMS No. 2262 Pulley Lock Tool with tool handle under swingarm pivot shaft when loosening the sprocket nut. Turn clockwise with ½" breaker bar and JIMS No. **5516** socket. On 2004-Present models, place handle of pulley lock tool under passenger footrest mount.
6. Place pulley lock tool handle over swingarm pivot shaft when torquing pulley nut by turning counter-clockwise. On 2004-present models, place handle of pulley lock tool over passenger footrest mount. Use red Loctite on sprocket nut. Torque nut to specification listed in service manual for year and model bike serviced.
7. Install locking plate and screws onto pulley following instructions in service manual. If using JIMS Mega Nut, follow instruction sheet No. 1708-IS.
8. Follow H-D service manual to replace sprocket cover, rear master cylinder, footrest assembly, exhaust system, and maxi fuse/battery connection.

CAUTION: WEAR SAFETY GLASSES OVER YOUR EYES.
SEE JIMS® CATALOG FOR HUNDREDS OF TOP QUALITY PROFESSIONAL TOOLS.
THE LAST TOOLS YOU WILL EVER NEED TO BUY.

Performance Parts For Harley-Davidson Motorcycles

555 DAWSON DRIVE, CAMARILLO, CA 93012 PHONE 805-482-6913 • FAX 805-482-9224
VISIT US ON THE WEB AT WWW.JIMSUSA.COM