



A Division of Thiessen Products, Inc.

INSTRUCTION SHEET FOR TOOL # 1 147

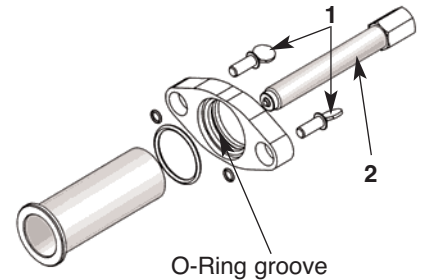
ALTERNATOR ROTOR REMOVER

Use on 1997 to present FLH or FLHT Ultra or any Big Twin to 2006 with a 45 AMP high output charging system.

WARNING: Disconnect negative battery cable before performing work.

Note: Read all instructions before starting job.

1. Minor preassembly required as shown in diagram below. Tuck O-ring inside the base plate's groove before inserting lightly lubricated tube through base plate.
2. Refer to H-D® Service Manual for removing components to gain access to the 45 AMP alternator rotor.
3. It is recommended that you use JIMS® No.1048 Hard Cap



Tool or equivalent to protect the end of the shaft. **Note:** Be sure that the sprocket shaft threads are free of any thread locking compound before installing the Hard Cap Tool.

4. Fully retract the press screw (**No.2**) as needed before attaching tool assembly against alternator rotor. Attach two thumb screws (**No.1**) into threaded holes on rotor as shown.
5. Turn the press screw in using either a wrench or ratcheting socket drive until rotor is free. **IMPORTANT!:** Never use an impact driver with this tool.

CAUTION: WEAR SAFETY GLASSES. EXCESSIVE FORCE MAY DAMAGE PARTS AND TOOL. SEE JIMS® CATALOG FOR OVER 100 OTHER TOP QUALITY PROFESSIONAL TOOLS. THE LAST TOOLS YOU WILL EVER NEED TO BUY.

"FROM THE TRACK... TO THE STREET!"

555 DAWSON DRIVE, CAMARILLO, CA 93012 • PHONE 805-482-6913 • FAX 805-482-9224 • WWW.JIMSUSA.COM



A Division of Thiessen Products, Inc.

INSTRUCTION SHEET FOR TOOL # 1 147

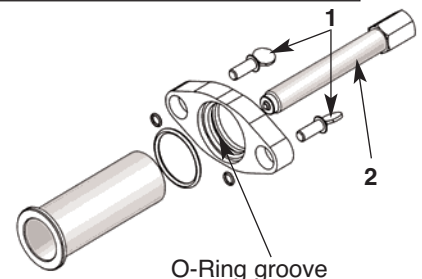
ALTERNATOR ROTOR REMOVER

Use on 1997 to present FLH or FLHT Ultra or any Big Twin to 2006 with a 45 AMP high output charging system.

WARNING: Disconnect negative battery cable before performing work.

Note: Read all instructions before starting job.

1. Minor preassembly required as shown in diagram below. Tuck O-ring inside the base plate's groove before inserting lightly lubricated tube through base plate.
2. Refer to H-D® Service Manual for removing components to gain access to the 45 AMP alternator rotor.
3. It is recommended that you use JIMS® No.1048 Hard Cap



Tool or equivalent to protect the end of the shaft. **Note:** Be sure that the sprocket shaft threads are free of any thread locking compound before installing the Hard Cap Tool.

4. Fully retract the press screw (**No.2**) as needed before attaching tool assembly against alternator rotor. Attach two thumb screws (**No.1**) into threaded holes on rotor as shown.
5. Turn the press screw in using either a wrench or ratcheting socket drive until rotor is free. **IMPORTANT!:** Never use an impact driver with this tool.

CAUTION: WEAR SAFETY GLASSES. EXCESSIVE FORCE MAY DAMAGE PARTS AND TOOL. SEE JIMS® CATALOG FOR OVER 100 OTHER TOP QUALITY PROFESSIONAL TOOLS. THE LAST TOOLS YOU WILL EVER NEED TO BUY.

"FROM THE TRACK... TO THE STREET!"

555 DAWSON DRIVE, CAMARILLO, CA 93012 • PHONE 805-482-6913 • FAX 805-482-9224 • WWW.JIMSUSA.COM